

PART OF THE NW.1/4, OF SECTION 26, T.7N., R.1E., S.L.B. & M.
ELKHORN SUBDIVISION PHASE 6

290

TAXING UNIT: 203

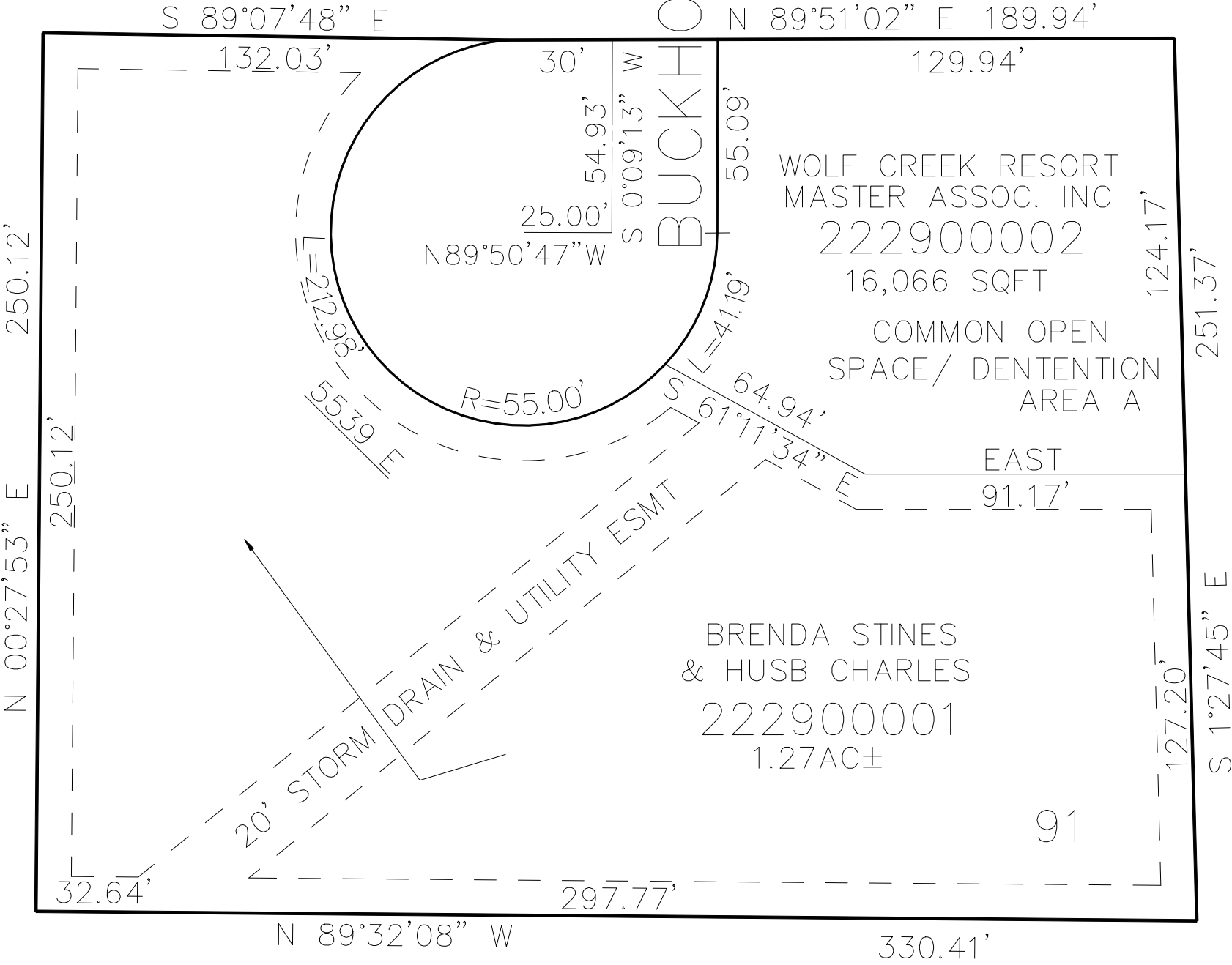
IN WEBER COUNTY
SCALE 1" = 40'

SEE PAGE 147

BUCKHORN DR.

SEE PAGE 20

SEE PAGE 20



SEE PAGE 20

10' UTILITY & DRAINAGE EASEMENTS EACH
SIDE OF PROPERTY LINES AS INDICATED
BY DASHED LINES EXCEPT AS OTHERWISE
SHOWN.

FOR COMPLETE ENG DATA SEE
ORIGINAL DEDICATION PLAT IN
BOOK 69, PAGE 07 OF RECORDS.